

## Sheet A-25—CEUS SSC Project GIS Data Summary

### Data for Quaternary Faults, Liquefaction Features, and Possible Tectonic Features in the CEUS

CEUS\_Q\_features\_USGS\_(pt/pl/po)\_R0.shp

**Data Description:** This layer combines Quaternary tectonic features representing known or suggested Quaternary faults, folds, fields of paleoliquefaction features, seismic zones, and geomorphic features. Feature descriptions were obtained from Crone and Wheeler (2000), Wheeler (2005), and USGS features downloaded from the USGS Quaternary Fault and Fold Database for classes A through C. Locations of classes A & B features were obtained from USGS Quaternary Fault and Fold database or from original reference noted in Wheeler (2005). Location of Class C features were obtained from descriptions, latitude/longitude coordinates, or small-scale figures in Crone and Wheeler (2000), or from original references noted in Crone and Wheeler (2000) or Wheeler (2005). The attributes of the shapefiles note the reference information, location notes, and feature names.

**Source (Internet URL, CD/DVD-ROM):** USGS Quaternary Fault and Fold Database: <http://earthquake.usgs.gov/hazards/qfaults/>.

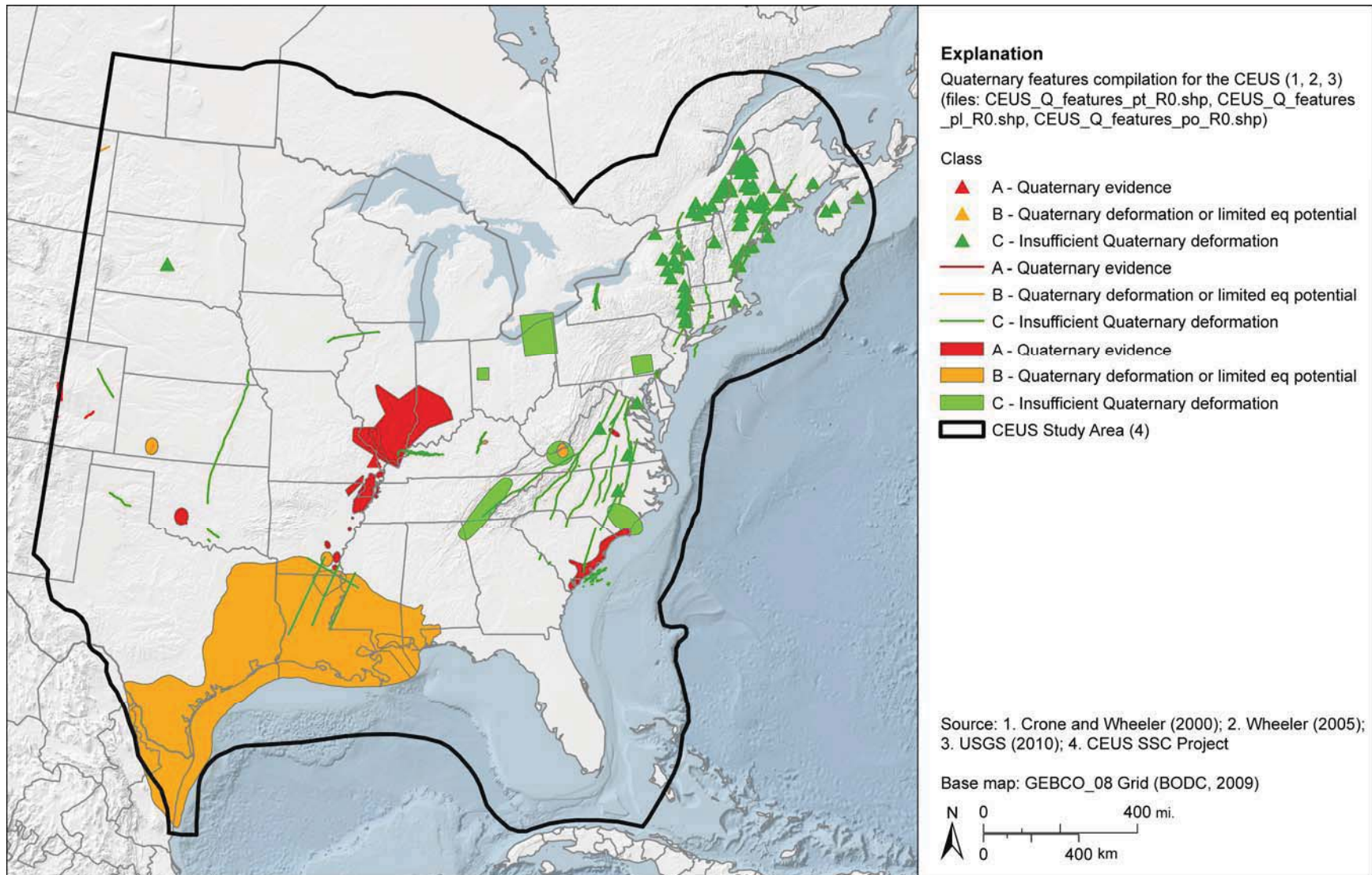
**Author/Publisher/Year:** Crone, A.J., and Wheeler, R.L., 2000, *Data for Quaternary Faults, Liquefaction Features, and Possible Tectonic Features in the Central and Eastern United States, East of the Rocky Mountain Front*. U.S. Geological Survey Open-File Report 00-0260, 342 pp.

Wheeler, R.L., 2005, *Known or Suggested Quaternary Tectonic Faulting, Central and Eastern United States— New Updated Assessments for 2005*: U.S. Geological Survey Open File Report 2005 1336, 40 pp.

USGS Quaternary Fault and Fold Database; website: <http://earthquake.usgs.gov/hazards/qfaults/>.

**Data Summary:** USGS Quaternary fault and fold database features as polylines and polygons were included with features digitized from the above references to create the ESRI shapefiles. Features were digitized at, or better, than the scale of the source figures. Data are presented in geographic coordinates on the North American Datum of 1983.

**Disclaimer or Constraints on Use:** No constraints have been identified.



**Figure A-66**  
 Quaternary features compilation for the CEUS (Crone and Wheeler, 2000; Wheeler, 2005; USGS, 2010)